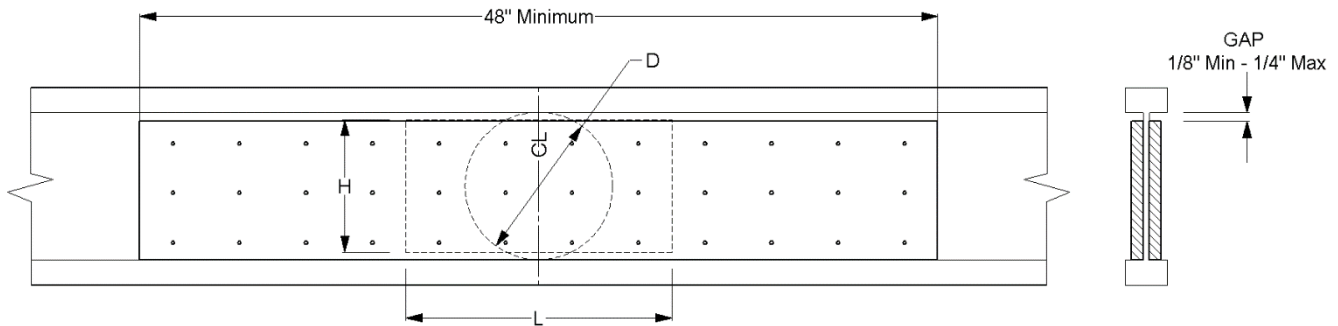


# Pinkwood PKjoists® Standard Web Repair

## Web hole shear restoration repair

PKjoist® web penetrations for mechanical, plumbing and electrical services is quite common. Occasionally, however, a penetration can occur in the wrong place or too close to an adjacent web penetration. The provided detail restores the joists original web shear capacity provided that the joist is uniformly loaded, at least 24-inches from bearing, and the web penetration does not exceed the dimensions listed below.



Repair Detail Limitations

Joist Series	Joist Depth	Round	Rectangular	
		Max (D)	Max (L)	Max (H)
PKI 15	9-1/2"	4-1/2"	16"	4"
	11-7/8"	6-7/8"	16"	6"
PKI 10, 20, 23, 35Plus, 40, 50	9-1/2"	6-1/2"	16"	6"
	11-7/8"	8-7/8"	16"	8"
	14"	11"	16"	10"
	16"	13"	18"	12"

### Installation Notes

1. Use minimum 23/32" rated panel on both sides of joist.
2. Apply construction adhesive to entire contact surface of reinforcements.
3. Install reinforcement tight to the topside of the bottom flange centered over penetration.
4. Attach with min 8d common, 3 rows, clinched @ 4" o.c.

If you have any questions, please contact Pinkwood Ltd. for details.