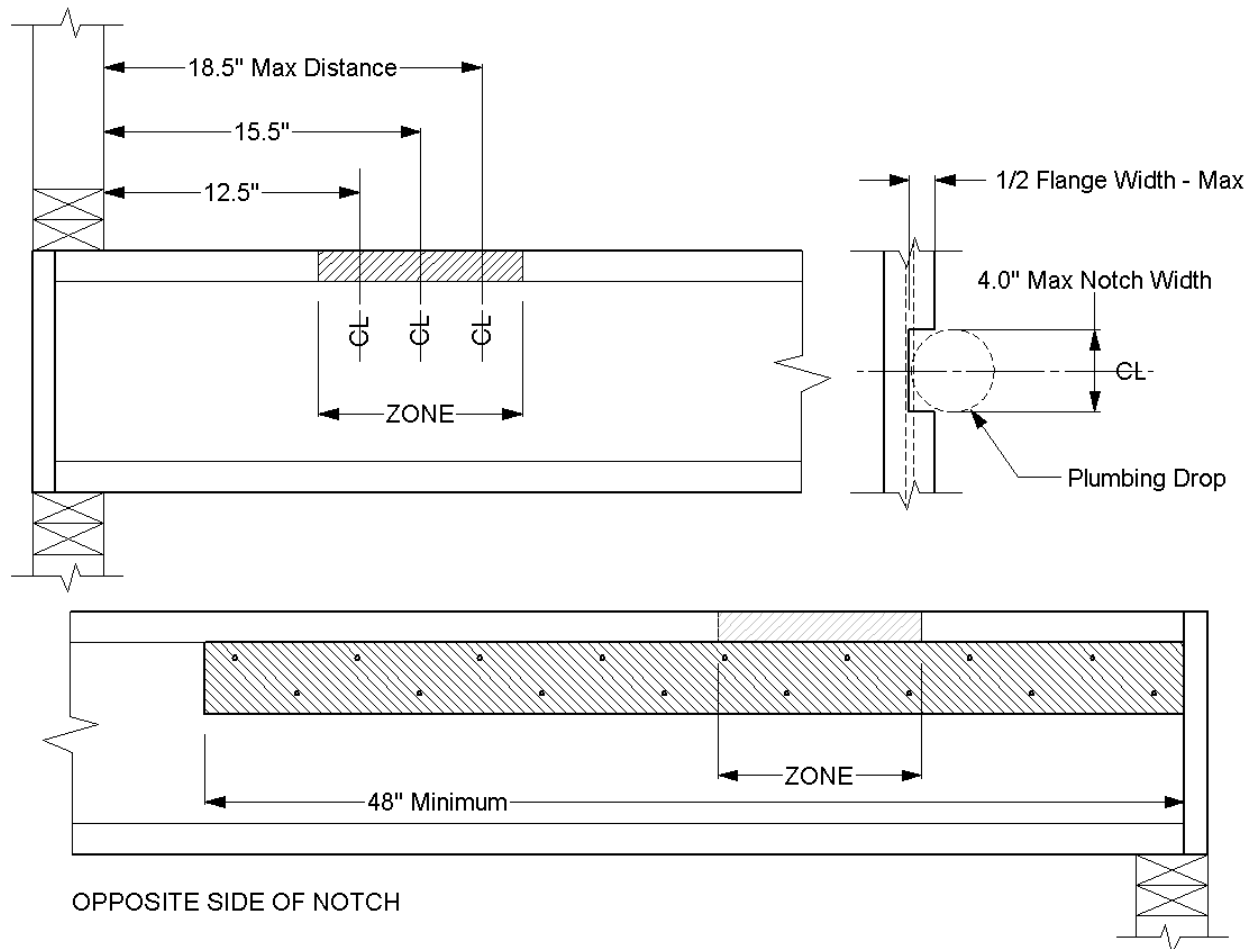


Pinkwood PKjoists®

Top Flange Notch Repair for Plumbing

Flange notch repair

While it is common for drops to occur close to joist locations, when possible, shift the joist away from such drops to avoid inadvertent cutting with the joist top flange. (see **TB02 On-Center shift allowance for plumbing**) When this is not possible, or when the joist shift was missed during construction, top flange notches on uniformly loaded joists can be repaired in a standardized method provided the location, size and length of these notches are as indicated below.



Installation Notes

1. Use minimum 2x4 #2 Grade or better.
2. Apply construction adhesive to entire contact surface of reinforcement.
3. Install reinforcement tight to the underside of the top flange opposite the side of the notch.
4. Attach with min 10d common, 2 rows, staggered and clinched @ 6" o.c. or #8 wood screws.

If you have any questions, please contact Pinkwood Ltd. for details.

