

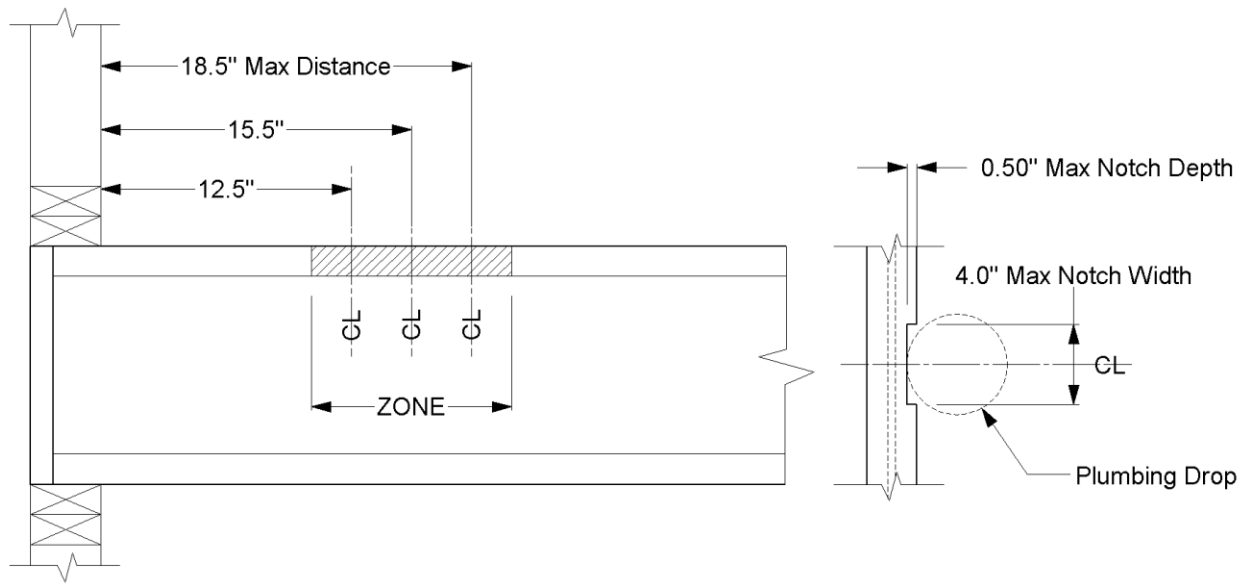
Pinkwood PKjoists®

Top Flange Notch Allowance for Plumbing

Flange notch allowance

Plumbing penetrations for toilets and other items are common in residential and commercial construction. Such subfloor penetrations typically occur at pre-determined distances from the framed backwall of the bathroom. The most common centerline distances for plumbing drops are 12.5", 15.5" and 18.5" from rough framing wall, leaving 0.5" (½) gap for gypsum board.

While it is common for drops to occur close to joist locations, when possible, shift the joist away from such drops to avoid inadvertent cutting with the joist top flange. (see **TB02 On-Center shift allowance for plumbing**) When this is not possible, or when the joist shift was missed during construction, small top flange notches are allowed provided the location, size and length of these notches are as indicated below.



NOTE: When top flange notches are within the guidelines listed above, no repair engineering or sealed calculations are required.

If you have any questions, please contact Pinkwood Ltd. for details.